



Model WF-8935LiS
Output: 35 (LA), 32.5 (LI) Amps DC
Input: 105-130 VAC,
60 Hz, 600W

Model WF-8945LiS
Output: 45 (LA), 41.5 (LI) Amps DC
Input: 105-130 VAC,
60 Hz, 770W

Model WF-8955LiS
Output: 55 (LA), 50 (LI) Amps DC
Input: 105-130 VAC,
60 Hz, 940W

Model WF-8955ELiS
For 220 VAC Service
Output: 55 (LA), 50 (LI) Amps DC
Input: 190-260 VAC,
50 Hz, 950W

Model WF-8965LiS
Output: 65 (LA), 60 (LI) Amps DC
Input: 105-130 VAC,
60 Hz, 1110W

Model WF-8975LiS
Output: 75 (LA), 70 (LI) Amps DC
Input: 105-130 VAC,
60 Hz, 1280W

Lithium Switch: One Unit with Battery Flexibility

Our WF-8900 Series has been the RV industry's preferred power center for years, and now offers a Lithium Switch option with the WF-8900LiS Series! The Lithium Switch allows customers the versatility to change charging modes between lead-acid and lithium batteries by simply hitting a switch. Easy to use, the WF-8900LiS Series provides a convenient, cheaper, long-term option that eliminates the hassle of swapping out a whole unit.

Designed to take advantage of installation codes, which allow 30 Amp service and 6 branch circuits, this series has more circuits than most products available in its class.

Reliability. Vertically integrated, WFCO has total supply chain control, ensuring quality materials, parts, and processes at each stage. Components are quality tested at critical manufacturing stages resulting in zero faults at the final 4-hour burn-in test, helping keep warranty claims below 1%. All models are UL® and cUL® listed and FCC Class B compliant.

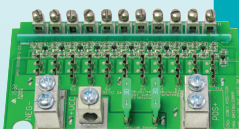
PRODUCT FEATURES



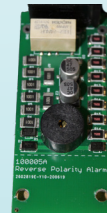
LED Warning Lights: WFCO was the first to use LED alerts for open 12V circuits. Our exclusive viewing window lets RV owners easily see when there's a problem.



The Lithium Switch allows customers the versatility to change charging modes between lead-acid and lithium batteries by simply hitting a switch.



The WF-8900LiS Series features eleven DC circuits which include two 30 Amp DC circuits, allowing manufacturers to install more high power consuming appliances like slide-out motors, electric awnings, and beds.



Optional Reverse Polarity Detection meets new RVIA and NEC requirements with an audible alarm notification. No additional wiring or hook-up required and accepts hi-pot testing.

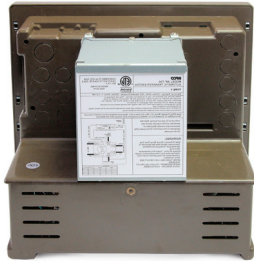


Zero clearance design is a space-saving WFCO exclusive (available in higher output WF-8965/75LiS models). The airflow system draws in cool air and expels warm air from the front. Space is not needed behind the WF-8965/75LiS models for warm air exhaust. The cooling fan operates only when the electric load requires it, avoiding temperature spikes and providing quieter operation.

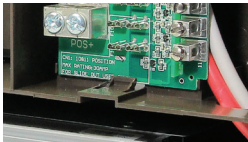
WF-8900LiS Series

EASY INSTALLATION

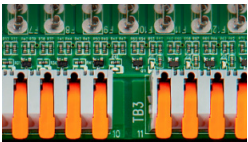
All WFCO models are designed with the installer and assembly line in mind. We work with installers every day to find ways to streamline installation to reduce time and adjustments.



Integrated transfer switch mount allows the WFCO T-30 transfer switch to be easily installed directly to the back of the power center.



Thumb Tab design permits easy removal of DC fuse panel for out of box work and easy wire routing.



WAGO connectors crimp the wires themselves with spring pressure instead of screws, resulting in quicker installation and more accurate connections.

THE BATTERY GUARDIAN™

The WF-8900LiS Series is designed with optimized charging for battery chemistry in the unit. For Lead Acid Batteries, WFCO's automatic three-stage converter handles every charging need for the RV while extending the battery's life. For Lithium-Ion Batteries, the multi-stage process ensures a safe operating voltage for all loads, replaces energy back into the battery, and assures the lithium cells inside the battery remain balanced. See wfcoelectronics.com for details.



Optional GE model compatible with GE THQP slimline breakers.

SPECIFICATIONS	WF-8935LiS	WF-8945LiS	WF-8955LiS	WF-8955ELiS	WF-8965LiS	WF-8975LiS
Power Input	600W	770W	940W	950W	1110W	1280W
Input Voltage	105-130 VAC/60 Hz	105-130 VAC/60 Hz	105-130 VAC/60 Hz	190-260 VAC/50 Hz	105-130 VAC/60 Hz	105-130 VAC/60 Hz
Output Current (LA/LI)	35A/32.5A	45A/41.5A	55A/50A	55A/50A	65A/60A	75A/70A
Converter Type (LA/LI)	3 Stage Intelligent Charge / 2 Stage Intelligent Charge					
Voltage Output (LA/LI)	13.2 - 14.4 VDC / 13.6 - 14.6 VDC					
Normal mode	13.6 VDC					
Trickle charge mode (LA ONLY)	13.2 VDC					
Bulk charge mode (LA/LI)	14.4 VDC / 14.6 VDC					
Outer Dimensions	14.17"W x 11.81"H x 8.5"D					
Rough Opening	12.2"W x 11"H					
Weight	3 kg.	3.9 kg.	3.9 kg.	3.46 kg.	4.2 kg.	4.2 kg.

Certifications: UL* and cUL* listed and FCC Class B compliant. Specifications are subject to change without notice or obligation.

ALL MODELS: Standard Safety Features/Protections: Over Current, Over Temperature, Over Voltage, Reverse Polarity

Installation: AC Circuits: 1 Main with 9 Branch Circuits; DC Circuits: 11 DC, nine 20 Amp and two 30 Amp

Case Material: Plastic, Colors: Brown/Black



THE HEARTBEAT OF TODAY'S RVS
2021 Aeroplex Drive North · Elkhart, IN 46514
P- 877.294.8997 · F- 574.294.8698
wfcoelectronics.com

AD-BSC-0005-0 © 2016 WFCO Electronics Printed in USA 07/16

The RV Industry's Electrical Authority

Our Power Pros provide expert technical support for everything the RV industry needs. Visit wfcoelectronics.com/support.



THE POWER PROS™



EXPERT PRODUCT SUPPORT