



WF-8700LiS Series 35/40 Amps  
Zero Clearance Design

**Model WF-8725LiS**

Output: 25 (LA), 23 (LI) Amps DC  
Input: 105-130 VAC,  
60 Hz, 425W

**Model WF-8735LiS**

Output: 35 (LA), 32.5 (LI) Amps DC  
Input: 105-130 VAC,  
60 Hz, 595W

**Model WF-8740LiS**

Output: 40 (LA), 37 (LI) Amps DC  
Input: 105-130 VAC,  
60 Hz, 680W

## Battery Flexibility for Smaller RVs

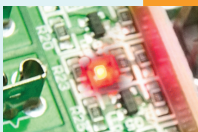
WFCO's proven WF-8700 Series now offers a Lithium Switch version with the WF-8700LiS Series. This is an example of our drive to deliver exactly what is needed for every RV. The Lithium Switch allows customers the versatility to change charging modes between lead-acid and lithium batteries by simply hitting a switch. Easy to use, the WF-8700LiS Series provides a convenient, cheaper, long-term option that eliminates the hassle of swapping out a whole unit.

The WF-8700LiS is our smallest and lightest power center, but it's big on benefits such as reliability, ease-of-installation, space-efficiency, and the ideal number of DC circuits.

**Reliability.** Vertically integrated, WFCO has total supply chain control, ensuring quality materials, parts, and processes at each stage. Components are quality tested at critical manufacturing stages resulting in zero faults at the final 4-hour burn-in test, helping keep warranty claims below 1%.

All models are UL® and cUL® listed and FCC Class B compliant.

### PRODUCT FEATURES



**LED Warning Lights:**  
WFCO was the first to use LED alerts for open 12V circuits. The exclusive viewing design in our WF-8735/40LiS models lets RV owners easily see when there's a problem.



The Lithium Switch allows customers the versatility to change charging modes between lead-acid and lithium batteries by simply hitting a switch.



Optional Reverse Polarity Detection meets new RVIA and NEC requirements with an audible alarm notification. No additional wiring or hookup required and accepts hi-pot testing.

**Other WF-8700LiS Features:**

- WF-8725LiS has three AC circuits in addition to one 30 Amp main circuit and four DC circuits for design flexibility in the smallest RVs.
- WF-8735/40LiS has five AC circuits in addition to one 30 Amp main circuit and six DC circuits for the needs of larger campers and small travel trailers.



Zero clearance design is a space-saving WFCO exclusive. The airflow system draws in cool air and expels warm air from the front. Space is not needed behind the WF-8735/40LiS models for warm air exhaust. The cooling fan operates only when the electric load requires it, avoiding temperature spikes and providing quieter operation.

# WF-8700LiS Series

## EASY INSTALLATION

All WFCO models are designed with the installer and assembly line in mind. We work with installers every day to find ways to streamline installation to reduce time and adjustments.



Pigtails are included for each DC circuit for easier and faster installation.

Insulated connectors may be used with tools pre-set to the proper torque settings for a positive connection and speedy installation.



### THE BATTERY GUARDIAN™

The WF-8700LiS Series is designed with optimized charging for battery chemistry in the unit. For Lead Acid Batteries, WFCO's automatic three-stage converter handles every charging need for the RV while extending the battery's life. For Lithium-Ion Batteries, the multi-stage process ensures a safe operating voltage for all loads, replaces energy back into the battery, and assures the lithium cells inside the battery remain balanced. See [wfcoelectronics.com](http://wfcoelectronics.com) for details.



Optional GE model compatible with GE THQP slimline breakers.

SPECIFICATIONS	WF-8725LiS	WF-8735LiS	WF-8740LiS
Power Input	425W	595W	680W
Input Voltage	105-130 VAC/60 Hz		
Output Current (LA/LI)	25A / 23A	35A / 32.5A	40A / 37A
Converter Type (LA/LI)	3 Stage Converter Charger / 2 Stage Converter Charger		
Voltage Output (LA/LI)	13.2 - 14.4 VDC / 13.6 - 14.6 VDC		
Normal mode	13.6 VDC		
Trickle charge mode (LA Only)	13.2 VDC		
Bulk charge mode (LA/LI)	14.4 VDC / 14.6 VDC		
Outer Dimensions	11 7/8"W x 7 5/16"H x 5"D	11 7/8"W x 8 1/4"H x 5 5/16"D	
Rough Opening	10 7/16"W x 6 1/8"H x 3 3/4"D	10 3/8"W x 6 7/8"H x 4 5/16"D	
Weight	4.75 lbs.	5.5 lbs.	

Certifications: UL<sup>®</sup> and cUL<sup>®</sup> listed and FCC Class B compliant. Specifications are subject to change without notice or obligation.

ALL MODELS: Standard Safety Features/Protections: Over Current, Over Temperature, Over Voltage, Reverse Polarity

Installation:

WF-8725LiS: AC Circuits: 4 (1 Main and 3 Branch Circuits); DC Circuits: 4 (3 Branch and 1 Battery);

WF-8735LiS, WF-8740LiS: AC Circuits: 6 (1 Main and 5 Branch Circuits); DC Circuits: 6 (5 Branch and 1 Battery)

Case Material: Plastic, Colors: Brown/Black



THE HEARTBEAT OF TODAY'S RVs

2021 Aeroplex Drive North · Elkhart, IN 46514  
P- 877.294.8997 · F- 574.294.8698

[wfcoelectronics.com](http://wfcoelectronics.com)

AD-BSC-0004-0 © 2016 WFCO Electronics Printed in USA 07/16

The RV  
Industry's  
Electrical  
Authority

Our Power Pros provide expert technical support for everything the RV industry needs. Visit [wfcoelectronics.com/support](http://wfcoelectronics.com/support).



EXPERT PRODUCT SUPPORT