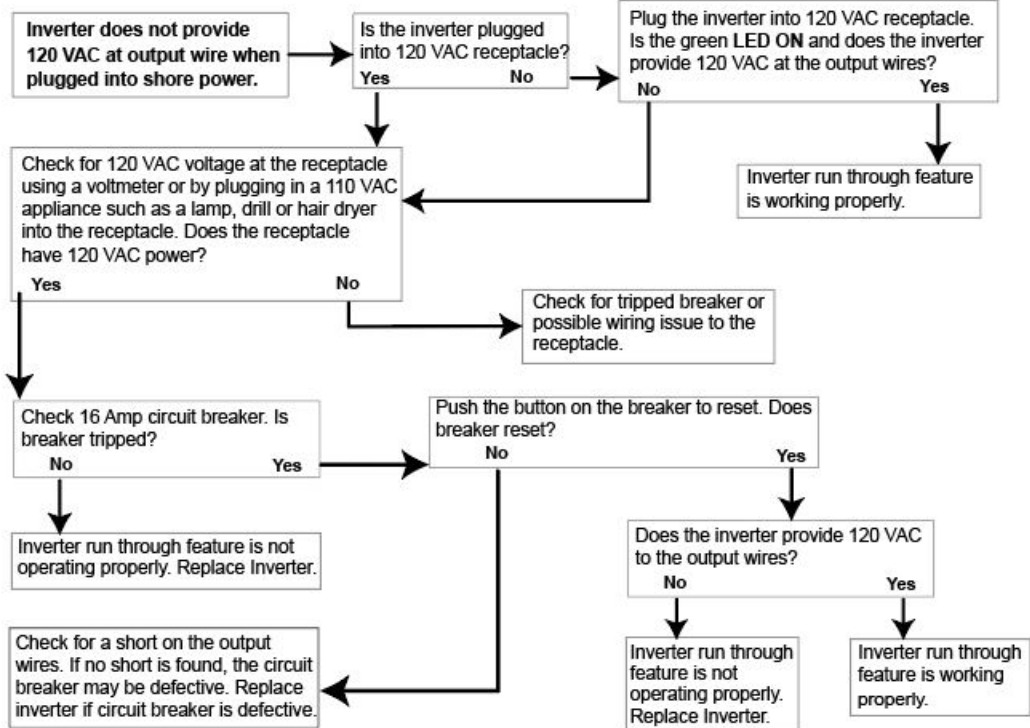


# Troubleshooting Guide for Shore- Power Connection

## WF- 5110R 1000 Watt Pure Sine Wave Inverter



### Remote Operation

The remote feature of the inverter provides a method to turn the inverter ON or OFF from a remote location. In order for this feature to work properly, the ON/OFF button on the front of the inverter needs to be in the OFF (out) position. When turning the inverter ON from the remote location a green LED on the remote will light, indicating that the inverter is ON. Should the green LED stay on constantly but the remote button has no function, check the ON/OFF button on the front of the inverter verifying that the ON/OFF button is in the OFF (out) position.